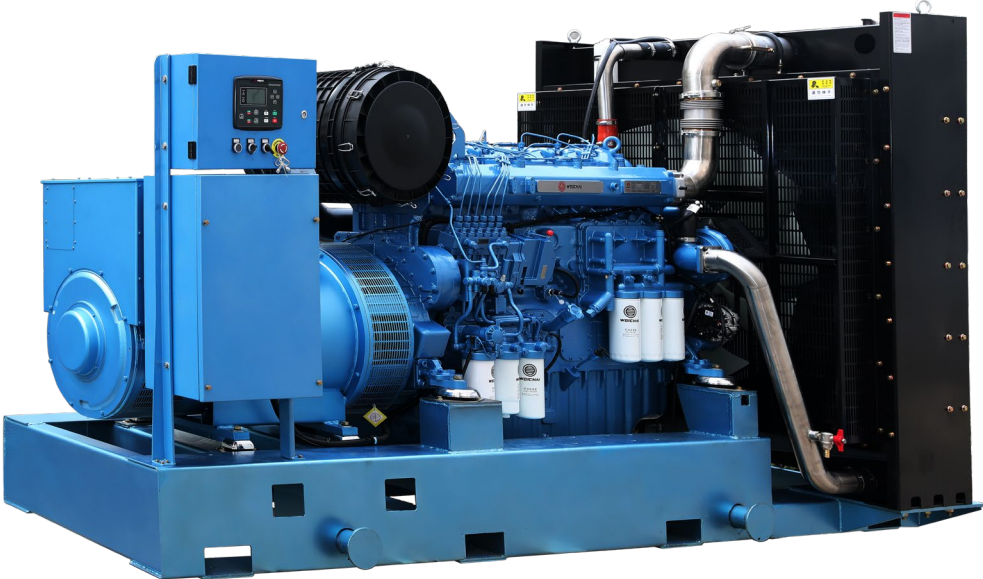


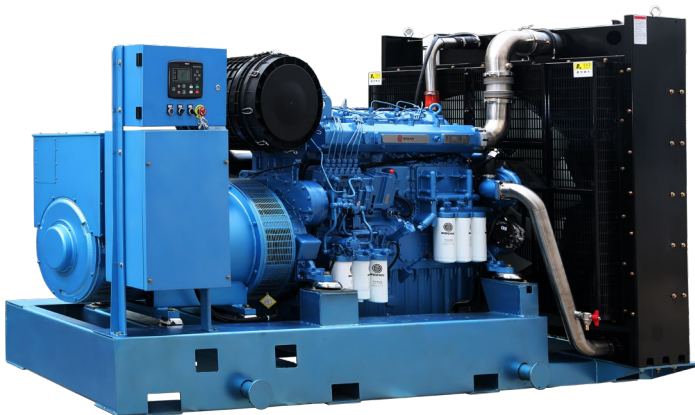
Land Based Genset- 6M33 Series

625-750kVA, 500-600kWe Prime



Engine

- Weichai 6M33 series, 6 cylinder, in-line 4 stroke, radiator cooled engine
- Well-designed air handling system with
 - Dry type, Replaceable paper element air cleaner with restriction indicator
 - Air to air after cooling
 - Optimized turbocharger for increased altitude capabilities
 - High efficiency, large heat area intercooler, reduce the air temperature after the intercooler
- Fuel system with A1 class electronic governing
- Standard integral set-mounted radiator system, designed and tested for 50°C ambient temperature
- First fill of lube oil and coolant
- Electrical starter motor with soft start engagement feature
- Intelligent fuel injection technology to start fast guarantee
- Battery charging alternator
- 2 x 24V DC batteries



Alternator

- Brushless type, Screen protected, Revolving field, Self excited alternator conforming to IS/IEC 60034-1
- Best in class efficiency
- Steel casing
- Compact design with sealed bearings for longer life and lesser maintenance
- IP23 standard protection level
- Impregnation on all wound components for better mechanical strength

Control Module Specifications

The DSE 7320 is an Auto Mains Failure Control Module

- Back-lit LCD display
- 3 Phase generator and 3 Phase Mains monitoring
- Monitoring speed, frequency, voltage, current, oil pressure, coolant temperature and fuel level
- Display warning, shutdown and engine status information
- Hours counter provides accurate information for monitoring and maintenance



Technical Data

Generator Set Specification

Model	WPG700*7	WPG825*7
Standby Rating kVA/kWe	700/560	825/660
Prime Rating kVA/kWe	625/500	750/600
Voltage V	400/230	400/230
Frequency Hz	50	50
Power Factor	0.8(lagging)	0.8(lagging)
No. of Phases	3	3

Engine specification

Make	Baudouin	Baudouin
Mode	6M33G715/5	6M33G825/5
Rated Speed	1500	1500
Prime Power	575	675
Cooling	Liquid (water + 50% antifreeze)	Liquid (water + 50% antifreeze)
Governor	Electronic	ECU
Aspiration	Turbocharged and Aftercooled	Turbocharged and Aftercooled
No. of cylinders	6,in-lin	6,in-line
Bore (mm) x Stroke (mm)	150x185	150x185
Displacement (L)	19.6	19.6
Fuel consumption@75%(L/h)	100	116
Fuel consumption@100% (L/h)	136	161
Starting system	24VDC Electrical	24VDC ECU
Total lubrication system capacity (L)	61	61
Total coolant capacity (L)	159	159
Air consumption (m ³ /h)	2400	2700
Exhaust Temperature (°C)	≤550	550
Exhaust back pressure (mBar)	≤75	75
Radiator design temperature (°C)	50	50

Alternator specification

Make	LEROY-SOMER	LEROY-SOMER
Alternator Frame	TAL-A47-F	TAL-A49-B
Exciter Type	Self-excitation	Self-excitation
Enclosure	IP23	IP23
Voltage regulation	≤±1%	≤±1%
Class of Insulation	H	H
Winding Pitch	2/3	2/3
Rotor	Single bearing	Single bearing

Remarks

Prime Rating: These ratings are applicable for supplying continuous electrical power (at variable load) in the lieu of commercially purchased power. There is no limitation to the annual hours of operation and this model can supply 10% overload power for 1 hour in 12 hours.

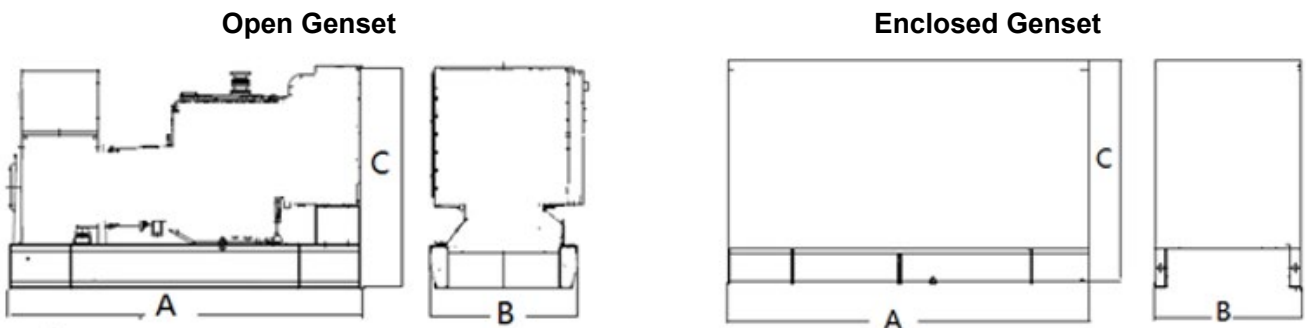
Standby Rating: These ratings are applicable for supplying continuous electrical power (at variable load) in the event of a utility power failure. No overload is permitted on these ratings. The alternator on this model is peak continuous tested (as defined in ISO 8528-3).

Standard Reference Conditions

Note: Standard reference conditions 25°C(77°F)Air Inlet Temp, 100m(328 ft) A.S.L. 30% relative humidity. Fuel consumption data at full load with diesel fuel with specific gravity of 0.85 and conforming to BS2869: 1998, Class A2.

Typical Enclosed Genset Dimensions

Genset Mode	Prime Rating (kVA)	Length A(mm)	Width B(mm)	Height C(mm)	Wet Weight (kg)	Standard Fuel tank Capacity (L)
WPG700B7	625	3750	1680	2100	5300	\
WPG700F7	625	3750	1680	2210	5500	700
WPG700L7	625	5300	2180	2300	8000	650
WPG825B7	750	3750	1680	2100	5500	\
WPG825F7	750	3750	1680	2210	5700	700
WPG825L7	750	5500	2180	2300	8300	650



Sales Promises

Weichai Power provides a full line of brand new and high quality products. Each and every unit is strictly factory tested.

Warranty time: 1、 2 years or 4000 hours from the sales date of the agent; 2、 3 years from the factory date.

First come, first served.

Service and parts are available from Weichai Power or distributors in your location.

Distributed By:

Manufacturer: Weichai Heavy Machinery Co., Ltd
 Address: 197 A, Fushou East Street, High-Tech Development Zone, Weifang, China
www.soarpower.com

