

# MAN V32/40



**Bore: 320 mm, Stroke: 400 mm**

Speed	r/min	750		720	
		50		60	
Frequency	Hz	Eng. kW	Gen. kW*	Eng. kW	Gen. kW*
		12V32/40		6,000	5,820
14V32/40		7,000	6,790	7,000	6,790
16V32/40		8,000	7,760	8,000	7,760
18V32/40		9,000	8,730	9,000	8,730

### Electr. GenSet Heat Rate at 100% Load

Cyl. No.	12	14	16	18
Liquid fuel (WB2007/2008) kJ/kWh	7,643/7,879	7,643/7,879	7,643/7,879	7,643/7,879

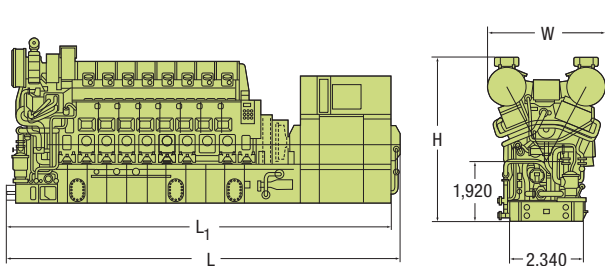
Lube Oil Consumption	kg/h	3.6	4.2	4.8	5.4
----------------------	------	-----	-----	-----	-----

*Nominal generator efficiency is 97%.*

### GenSet Dimensions

Cyl. No.		12	14	16	18
L	mm	11,045	11,710	12,555	13,185
L <sub>1</sub>	mm	10,450	11,115	11,950	12,580
W	mm	3,365	3,365	3,730	3,730
H	mm	4,850	4,850	5,245	5,245
Dry mass	t	101	113	126	138

Weights and dimensions are subject to final application



*Note: The above dimension: only reference.*

*The final dimensions are determined by the type of generator.*

*\*Based on nominal generator efficiencies of 97%.*



# V32/40

Configuration: V-Type

Bore: 320mm

Stroke: 400 mm

Speed: 720/750 rpm

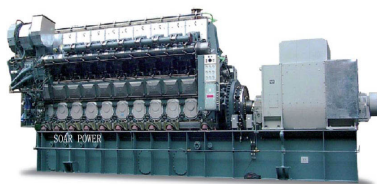
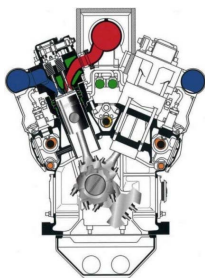
Cylinder rating: 500kW

Mean Piston speed: 9.6/10.m/sec

Mean eff.press.: 25.9/24.9bar

Max.combust.press.: 190bar

Fuel quality: ISO RMK700



URL: <http://www.soar.hk>

E-mail: [sale@soar.hk](mailto:sale@soar.hk)

Phone: +86-4008111308