

MAN L27/38S



Bore: 270 mm, Stroke: 380 mm

Speed	r/min	750		720	
Frequency	Hz	50		60	
		Eng. kW	Gen. kW*	Eng. kW	Gen. kW*
5L27/38S		1,600	1,536	1,500	1,440
6L27/38S		1,980	1,900	1,980	1,900
7L27/38S		2,310	2,218	2,310	2,218
8L27/38S		2,640	2,534	2,640	2,534
9L27/38S		2,970	2,851	2,970	2,851

Electr. GenSet Heat Rate at 100% Load

Cyl. No.		5L		6L		7L		8L		9L	
Liquid fuel (WB2007/2008)	kJ/kWh	8,140	8,095	8,140	8,095	8,140	8,095	8,140	8,095	8,140	8,095

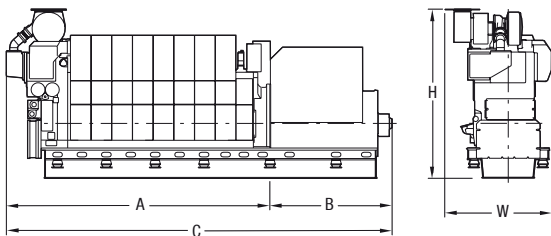
Lube Oil Consumption	kg/h	0.7-1.3		0.8-1.6		0.9-1.8		1.1-2.1		1.2-2.4	
----------------------	------	---------	--	---------	--	---------	--	---------	--	---------	--

Nominal generator efficiency is 96%.

GenSet Dimensions

Cyl. No.		5L	6L	7L	8L	9L
A	mm	4,346	4,791	5,236	5,681	6,126
B	mm	2,486	2,766	2,766	2,986	2,986
C	mm	6,832	7,557	8,002	8,667	9,112
W	mm	2,293	2,293	2,420	2,420	2,420
H	mm	3,712	3,712	3,899	3,899	3,899
Dry mass	t	40.0	44.5	50.4	58.2	64.7

Weights and dimensions are subject to final application



Note: The above dimension: only reference.

The final dimensions are determined by the type of generator.

*Based on nominal generator efficiencies of 96%.



L27/38

WB 2007

WB 2008

Configuration: In-line

Bore: 270mm

Stroke: 380 mm

Speed: 720/750 rpm

Piston speed: 9.1/9.5m/sec

Mean eff.press. :

5 cyl.engine :23.0/23.5 bar

6,7,8,9 cyl.engine (CRO) :25.3/24.3bar

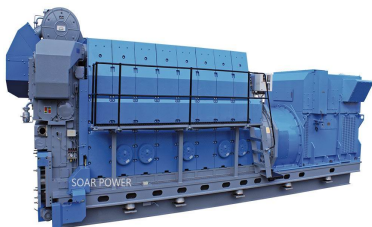
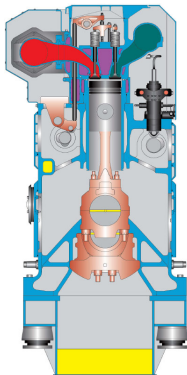
6,7,8,9 cyl.engine(MGO/MDO):26.1/25.7bar

Max.combust.press. :

5 cyl.engine:190 bar

6, 7, 8, 9 cyl.engine:200 bar

Fuel quality: ISO RMK700



URL: <http://www.soar.hk>

E-mail: sale@soar.hk

Phone: +86-4008111308