

# MAN L35/44DF



Bore 350 mm, Stroke 440 mm		6L	8L	10L
Engine speed	rpm	750/720	750/720	750/720
Frequency	Hz	50/60	50/60	50/60
Electr. Genset power	kW	3,107/2,989	4,143/3,987	5,189/4,993

### Electr. Genset heat rate at 100% load

Liquid fuel (WB2007/2008) kJ/kWh	8,064	8,064	8,047
Gas fuel (WB2007/2008) kJ/kWh	7,534	7,534	7,518

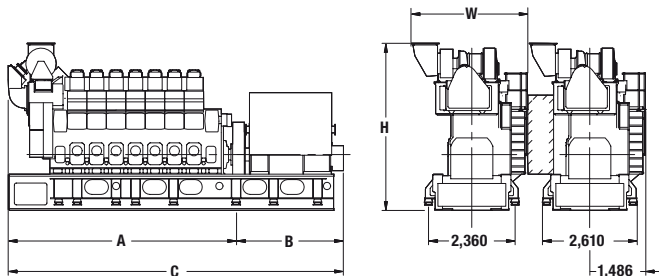
Liquid fuel: HFO or diesel fuel. Gas fuel: Incl. pilot fuel

Lube oil consumption	kg/h	1.5–1.6	2.0–2.1	2.6–2.7
----------------------	------	---------	---------	---------

### Dimensions

A	mm	6,485	7,545	8,605
B	mm	5,265	6,407	7,556
C	mm	11,750	13,952	16,161
W	mm	2,539	2,678	2,678
H	mm	4,163	4,369	4,369
Genset dry mass	t	85	103	118

Weights and dimensions are subject to final application



Note: The above dimension: only reference.

The final dimensions are determined by the type of generator.



# MAN L35/44DF

WB 2007  
WB 2008

Configuration: In-line

Bore: 350 mm

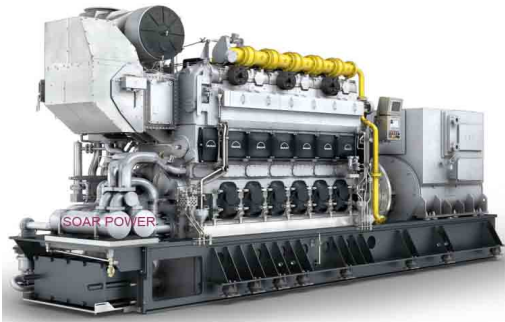
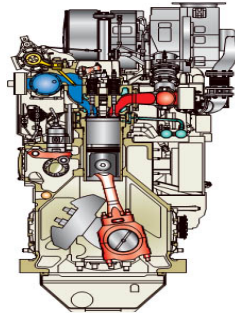
Stroke: 440 mm

Cylinder Output: At 750rpm : 530kWm  
At 720rpm : 510kWm

Speed: 750/720 rpm

Piston speed: 11/10.6 m/sec

Mean eff.press.: 20.0/ 20.1bar



URL: <http://www.soar.hk>  
E-mail: [sale@soar.hk](mailto:sale@soar.hk)  
Phone: +86-4008111308