

Marine Propulsion System

H46/60P

Tier II, Tier III (with SCR)

Bore: 460 mm, Stroke: 600 mm

Controllable Pitch Propeller

Permit high skew angles to minimize noise and vibration.

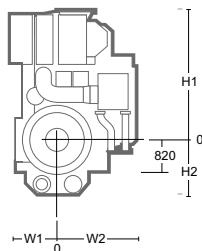
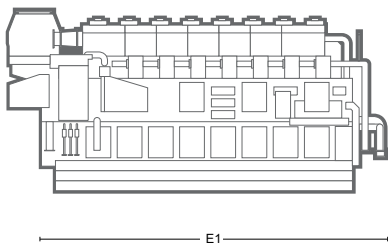
Fixed Pitch Propeller

Guarantee optimum thrust, minimal noise and vibration level.

Dimensions

| 600 rpm | Rated Output cyl. at Engine (kW) | Engine dimension (mm) & dry weight (ton) | | | | | |
|---------|---|--|-------|-------|-------|-------|---------------|
| | | E1 | H1 | H2 | W1 | W2 | Dry Weight |
| 6 | 7,500 | 7,351 | 3,300 | 1,408 | 1,409 | 2,141 | 116 |
| 7 | 8,750 | 8,171 | 3,400 | 1,408 | 1,409 | 2,141 | 134 |
| 8 | 10,000 | 8,991 | 3,400 | 1,408 | 1,409 | 2,141 | 149 |
| 9 | 11,250 | 9,811 | 3,400 | 1,408 | 1,409 | 2,141 | 165 |

E1 : Dimension between eng. flywheel to eng. free end.



Marine Propulsion System

Tier II, Tier III (with SCR)

H46/60P

Specific Fuel Oil Consumption

| Load | 600 rpm |
|------------------|-----------|
| SFOC at 100% MCR | 177 g/kWh |
| SFOC at 85% MCR | 175 g/kWh |

*) Note :

- 1) Reference condition based on ISO 3046/1
- 2) Fuel oil based on LCV(Lower Calorific Value) 42,700kJ/kg
- 3) Tolerance +5% and without engine driven pumps
- 4) NOx Emission limitation : IMO Tier II

#) Based on the CPP Constant speed operation (For FPP : Please contact us)

Specific Lubricating Oil Consumption

Lub. Oil: 0.6 g/kWh

Application

- Controllable pitch propulsion
- Fixed pitch propulsion
- Azimuth thruster propulsion
- Pump drive



SOAR POWER GROUP

Http://www.soarpower.com

E-mail: sale@soarpower.com

Hotline: +86-4008111308