

# Marine Offshore Gensets

**H35DFV | Bore: 350 mm, Stroke: 400 mm**

## Main Data

Speed Frequency	720 rpm 60 Hz		750 rpm 50 Hz	
	Eng.kW	Gen.kW	Eng.kW	Gen.kW
12H35DFV	5,760	5,587	5,760	5,587
14H35DFV	6,720	6,518	6,720	6,518
16H35DFV	7,680	7,449	7,680	7,450
18H35DFV	8,640	8,381	8,640	8,380
20H35DFV	9,600	9,312	9,600	9,312

Based on alternator efficiency of 97 %.

## Heat Rate & SFOC (100% Load)

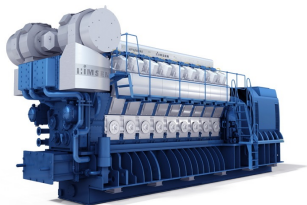
	720 rpm / 60 Hz	750 rpm / 50 Hz
Heat rate @ Gas mode	7,545 kJ/kWh	7,545 kJ/kWh
SFOC @ Diesel mode	187 g/kWh	189 g/kWh

\*) Note :

- 1) Reference condition based on ISO 3046/1
- 2) Main fuel oil based on marine diesel oil, LCV(Lower Calorific Value) 42,700kJ/kg
- 3) Fuel gas based on natural gas, Lower Heating Value 36MJ/Nm<sup>3</sup>, methane number Min. 80
- 4) NOx Emission limitation : IMO Tier II on Diesel mode, IMO Tier III on Gas mode

## Specific Lubricating Oil Consumption

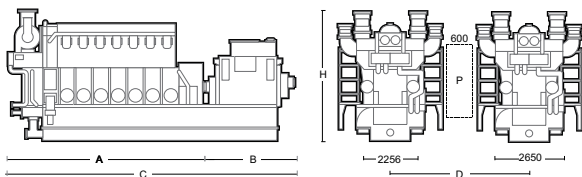
Lub. Oil: 0.4 g/kWh



Dimensions

Speed	cyl.	Dimension (mm)				Dry Mass (ton)	
		A	B <sub>1)</sub>	C <sub>1)</sub>	H	Engine <sub>2)</sub>	GenSet <sub>1),3)</sub>
720 rpm	12	6,624	3,760	10,384	4,723	57.0	109.8
	14	7,295	3,860	11,155	4,723	64.3	122.3
	16	7,914	3,479	11,393	4,723	70.1	131.9
	18	8,585	3,859	12,444	4,794	77.3	142.2
	20	9,344	3,659	13,003	4,794	85.0	154.9

Speed	cyl.	Dimension (mm)				Dry Mass (ton)	
		A	B <sub>1)</sub>	C <sub>1)</sub>	H	Engine <sub>2)</sub>	GenSet <sub>1),3)</sub>
750 rpm	12	6,624	3,760	10,384	4,723	57.0	109.8
	14	7,295	3,860	11,155	4,723	64.3	122.3
	16	7,914	3,479	11,393	4,723	70.1	131.9
	18	8,585	3,859	12,444	4,794	77.3	142.2
	20	9,344	3,659	13,003	4,794	85.0	154.9



Remarks

- 1) Depending on alternator.
- 2) Without common base frame.
- 3) With common base frame & alternator (Maker: Hyundai Electric).

D: Min. distance between engines 4,405 mm (with gallery).

P: Free passage between the engines, width 600 mm and height 2,000 mm.

Note) All dimensions and weight are approximate value and subject to change without prior notice.



SOAR POWER GROUP  
[Http://www.soarpower.com](http://www.soarpower.com)  
 E-mail: sale@soarpower.com  
 Hotline: +86-4008111308