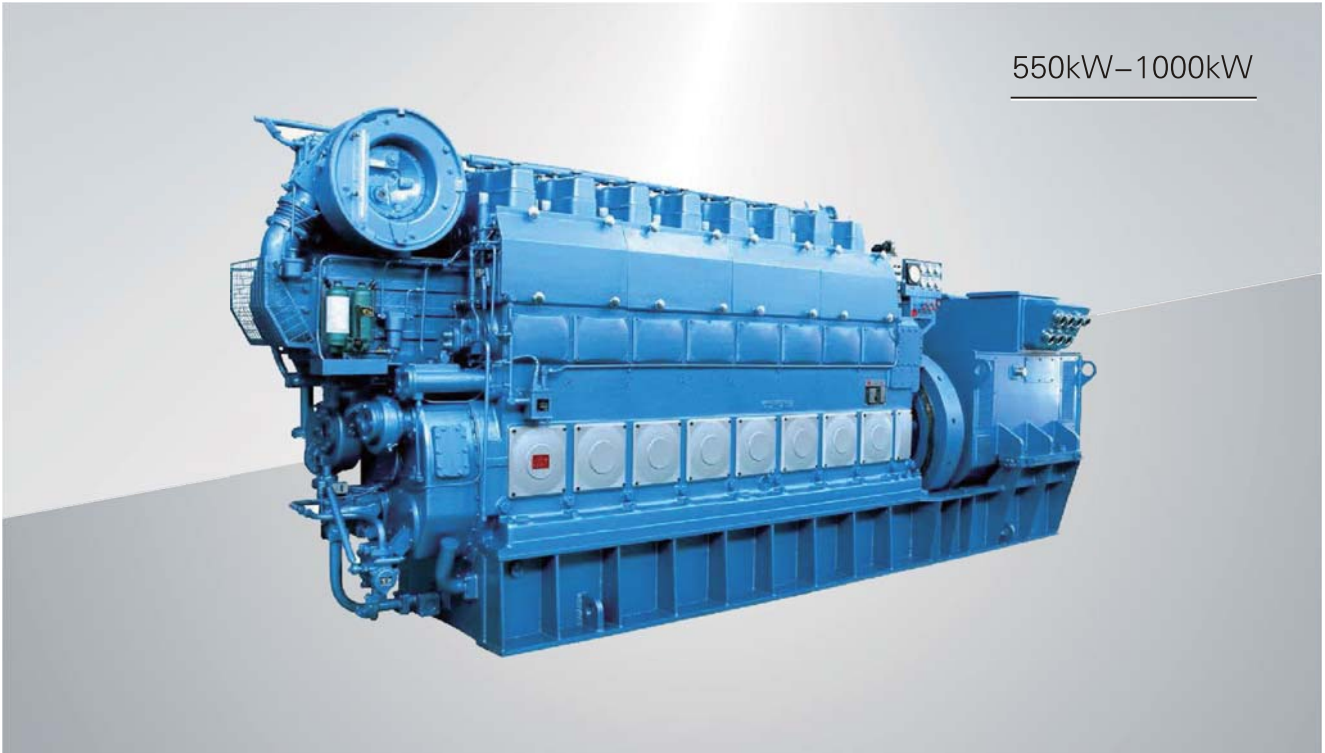


230系列 陆用发电机组

230 Series Stationary generating sets

550kW-1000kW



技术特点

PRODUCT CHARACTERISTIC

230柴油机采用无管路设计理念，油、水管路被集成在机体内，大大减少了零部件，进一步提高了整机的可靠性。

230柴油机与发电机一同安装在公共底座上，公共底座同时作为润滑油存储柜，结构紧凑有效减少了占用机房空间，发电机组即可与基础刚性安装，也可以根据客户要求采用弹性支承。

230 diesel engine adopts "no pipeline" design concept , and the oil、water pipelines are integrated in the engine block, so the parts and components have been significantly reduced, and it further improves the whole engine reliability.

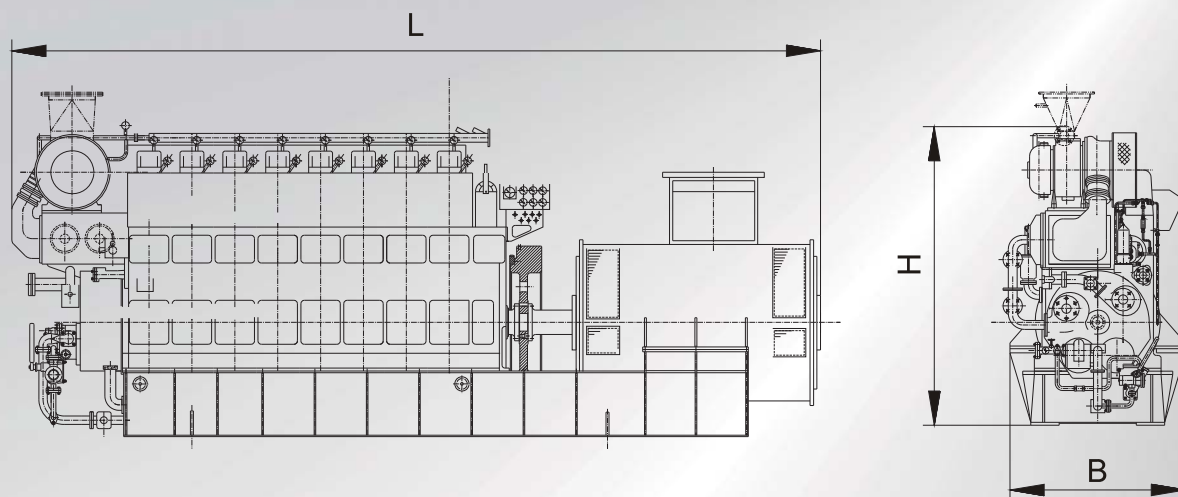
230 diesel engine and generating set are installed on the common base frame, which is as the storage tank of lube oil, so the configuration is compact and the space using engine room is reduced. The generating sets not only can rigidly assemble with ship body, but also adopt elastic bearing as per the client requirements.



- 交付海洋石油工程股份有限公司 (COOEC) 使用的230系列双频发电机组【 1000kW/(960kW)-50Hz/(60Hz) 】
- 230 series double-frequency generating set 【 1000kW/(960kW)-50Hz/(60Hz) 】 delivered to COOEC

发电机组外形尺寸

OVERALL DIMENSIONS



发电机组型号与规格

MODEL AND SPECIFICATION OF GENERATOR-SETS

机组型号 Model of gen-set	机组功率 Rated output	频率 Frequency	燃料类型 Fuel type	发动机型号 Engine model	转速 Rotating speed	机组外形尺寸(mm) Outside dimensions for gen-sets			重量 Weight
						长/L	宽/B	高/H	
	kW	Hz	cSt/50°C		r/min				kg
GC550LA	550	50/60	380HFO	6230ZD	750/720	5473	1534	2522	18000
GC700LA	700	50/60	380HFO	6230ZD	750/720	5673	1634	2522	18500
GC960LA	960	60	380HFO	8230ZD	720	6629	1634	2573	23000
GC1000LA8	1000	50	380HFO	8230ZD	750	6629	1634	2573	23000

发动机型号与规格

THE MAIN SPECIFICATIONS PARAMETERS OF ENGINES

发动机型号 Model	缸数 Cylinders number	额定功率 Rated power	最大功率 (一小时功率) Max. power (One hour power)	缸径 Cylinder diameter	冲程 Stroke	转速 Speed	活塞平均速度 Mean speed of the piston	平均有效压力 Mean effective pressure	滑油消耗率 Spec. lube oil consumption	燃油消耗率 Spec. fuel oil consumption	启动方式 Start mode	噪音 Noise
		kW	kW	mm	mm	rpm	m/s	Mpa	g/kW.h	g/kW.h		dB(A)
6230ZD	6	810	891	230	300	750/720	7.5	1.73	1	192	气动马达 Pneumatic motor	98
8230ZD	8	1100	1210	230	300	750/720	7.5	1.762	1	192		100